

Greater sensitivity than traditional guaiac-based methods. Increased specificity to lower GI bleeding makes SPECIFIC an ideal tool for colorectal cancer screening.

## Benefits

- Ability to screen two specimens using a single test cassette
- Meets the American Cancer Society multiple-day testing recommendation
- No diet or drug restrictions
- Patient-friendly collection procedure
- Favorable reimbursement

## Reliability

- Analytical Sensitivity: 50ng Hb/ml buffer or 50µg Hb/g feces
- Specific for human hemoglobin
- Manufactured in the USA

## Convenience

- 30-day room temperature specimen stability
- 24-month shelf life from date of manufacture
- Physician Office (HSSPCAS-25) or Patient Take Home Kit (HSSP-25) for physicians & patients



**CLIA Waived**

## Reimbursement Codes

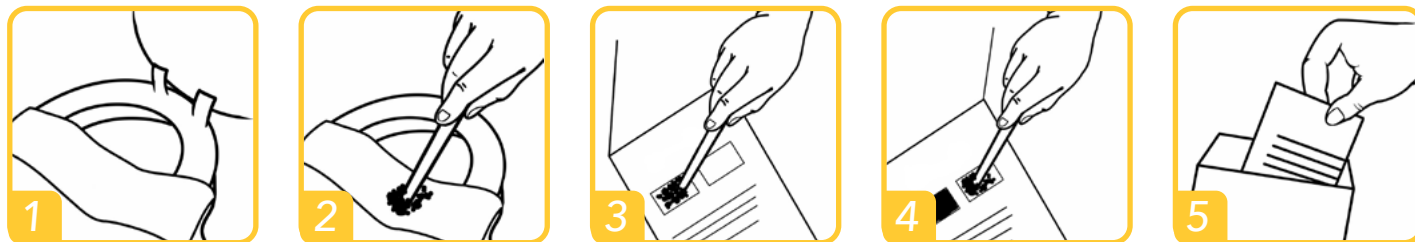
- G0328  
Colorectal cancer screening with immunochemical FOBT
- 82274  
Blood, occult, by fecal hemoglobin determination with immunochemical FOBT

*\*All reimbursement codes should be accompanied by an ICD9 Code*

Contact your medical supplies distributor for more information.

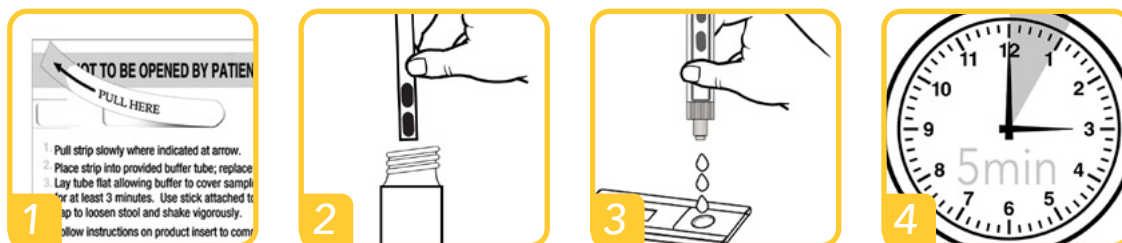
www.immunostics.com  
1 (800) 722-7505

## Patient Instructions



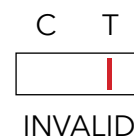
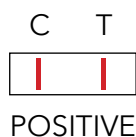
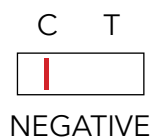
1. Lift toilet seat and position provided sample collection paper across rim of toilet bowl.
2. Deposit bowel movement onto collection paper. Collect sample from 4 different sites of the stool using one of the provided applicator sticks.
3. Place sample card on a flat surface, open flap of **DEVEL-A-TAB** sample card. Apply sample to window 1. Spread evenly and fill window with stool sample. Close flap. Flush collection paper.
4. Repeat steps 2 thru 4 for second bowel movement. Apply sample to window 2. Close the flap.
5. Insert completed **DEVEL-A-TAB** sample card into enclosed mailing pouch and return to healthcare provider.

## Physician Instructions



1. Slowly peel back the sample tab.
2. Place sample strip into preparation buffer tube and replace cap. Shake tube vigorously.
3. Squeezing the tube slightly, dispense three (3) drops into cassette well.
4. Read result at five (5) minutes.

## Result Reading



## Ordering Information

hema-screen SPECIFIC Kit  
**iFOBT (HSSP-25)**  
35 Mailing Envelopes  
35 DEVEL-A-TAB slides  
25 Test Cassettes  
25 Buffer Tubes

hema-screen SPECIFIC Test  
**iFOBT (HSSPCAS-25)**  
25 Test Cassettes  
25 Buffer Tubes

hema-screen SPECIFIC Mailing Envelopes  
**iFOBT (HSSPENV-20)**  
20 Mailing Envelopes  
20 DEVEL-A-TAB slides